



Designed by fluidesign  
Printed on ecoStar 140gsm  
100% Recycled paper

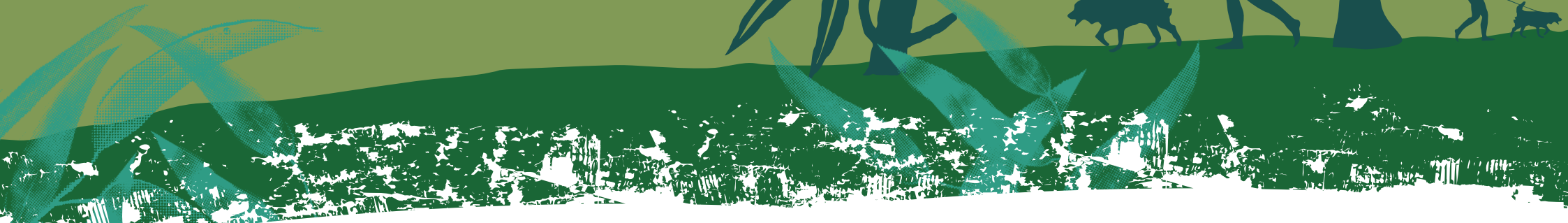
Committed to the Barwon River

**Corangamite CMA manages 20 kilometres of the Barwon River, from *Queens Park Bridge* to the *lower breakwater*.** We are also responsible for controlling land use within this management area.

Thousands of people use the Barwon River every day for walking, jogging, cycling, picnics, skiing, rowing, boating, fishing and swimming.

Corangamite CMA is committed not just to improving the health of the Barwon, but to improving facilities on river reserves such as paths, seating and signage.

You can help preserve the Barwon River for future generations by picking up after your dog, putting litter in bins, conserving water, disposing of chemicals appropriately and keeping lawn clippings and other pollutants out of drains.



**For further information**  
contact Corangamite CMA  
64 Dennis Street, Colac 3250  
PH: 03 5232 9100  
info@ccma.vic.gov.au  
www.ccma.vic.gov.au



**Barwon River**  
*through Geelong*



# KEEP DOGS ON LEADS



## Barwon River through Geelong

### Going walkies

The extensive network of walking trails and open spaces along the Barwon River are fantastic for dog walking.

However in such exciting and stimulating surrounds, our furry friends can become unruly. That's why Corangamite CMA has a "dogs on leads" policy along the Barwon.

We ask that dog owners show courtesy to other trail users by keeping their dogs securely restrained when walking between Queens Park Bridge and the lower breakwater.

Corangamite CMA, in partnership with the City of Greater Geelong, carries out regular checks to ensure owners are restraining their canine companions.

Penalties are imposed on owners who flout the rules.

### Leading the way

You know your canine is the friendliest creature on four legs. But strangers don't. Not everyone is confident around dogs, which is why it's best to keep your dog on a lead. Along the Barwon River's sometimes narrow trails, even the most well-meaning pet can get into mischief. Remember, you are legally responsible for your dog and its actions.

Unrestrained, your dog could:

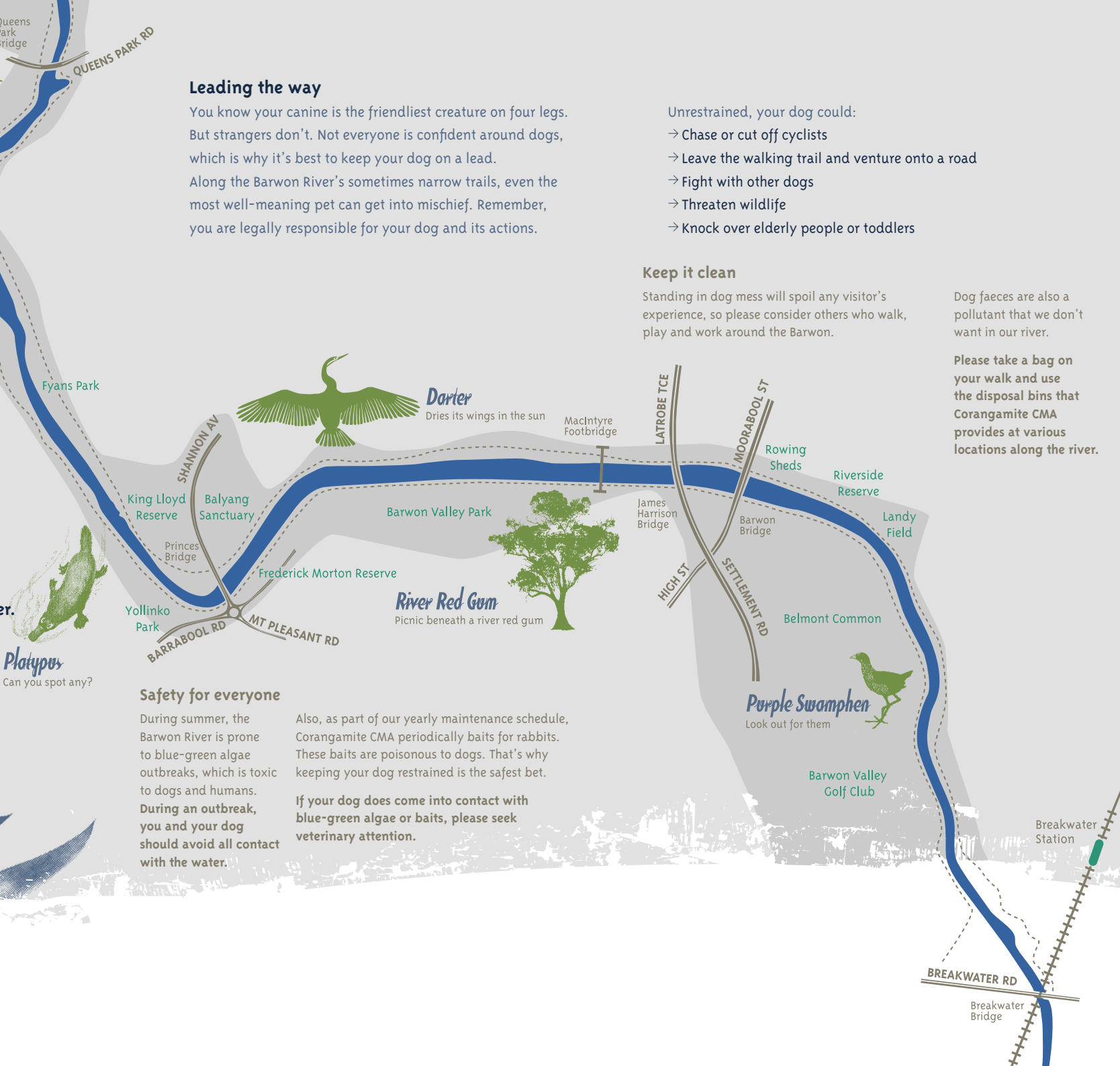
- Chase or cut off cyclists
- Leave the walking trail and venture onto a road
- Fight with other dogs
- Threaten wildlife
- Knock over elderly people or toddlers

### Keep it clean

Standing in dog mess will spoil any visitor's experience, so please consider others who walk, play and work around the Barwon.

Dog faeces are also a pollutant that we don't want in our river.

Please take a bag on your walk and use the disposal bins that Corangamite CMA provides at various locations along the river.



**Platypus**  
Can you spot any?

### Safety for everyone

During summer, the Barwon River is prone to blue-green algae outbreaks, which is toxic to dogs and humans. During an outbreak, you and your dog should avoid all contact with the water.

Also, as part of our yearly maintenance schedule, Corangamite CMA periodically baits for rabbits. These baits are poisonous to dogs. That's why keeping your dog restrained is the safest bet.

If your dog does come into contact with blue-green algae or baits, please seek veterinary attention.

**River Red Gum**

Picnic beneath a river red gum

**Purple Swamphen**

Look out for them